

Piano Man

Billy Joel

(Pop Rock)

in 3/4

A

B

B

C

Chords: C, E_{/B}, A_m, C_{/G}, F, C_{/E}, D₇, G, C, C, C, C, C, C, C, C, C, C, C, C, E_m_{/B}, A_m, C_{/G}, F, G₁₁, C, F_{/C}, C_{Δ7}, G₁₁, C, E_m_{/B}, A_m, C_{/G}, F, C_{/E}, D₇, G, C, E_m_{/B}, A_m, C_{/G}, F, G₁₁, C, C, A_m, A_m_{/G}, D₇_{/F#}, F, A_m, A_m_{/G}, D₇_{/F#}, D₇, G, G_{/F}, C_{/E}, G₇_{/D}, C, E_m_{/B}, A_m, C_{/B}, F, C_{/E}, D₇, G, C, E_m_{/B}, A_m, C_{/G}, F, G₁₁, C, F_{/C}, C_{Δ7}, G₁₁, C, C

1. 2.

PIANO MAN

Words and Music by
Billy Joel

Moderately

1st time, directly to verse

Last time, Fine

slower

A C

Em/B bass

Am

C/G bass

1. It's nine o'clock on a Sat-ur-day, The
 (2. Now) John at the bar is a friend of mine, He
 (3. Now) Paul is a real-es-tate nov-el-ist, Who
 (4. It's a) pret-ty good crowd for a Sat-ur-day, And the

F C/E bass D7 G C

reg - u - lar crowd shuf - fles in _____ There's an old man _____
 gets me my drinks for free, _____ And he's quick with a _____
 nev - er had time for a wife _____ And he's talk - in' with _____
 man - ag - er gives me a smile 'Cause he knows that it's _____

Em/Bbass Am C/G bass F G11

_____ joke sit - ting next to me _____ Mak - in' love to his ton - ic and
 or to light up your smoke But there's some - place that he'd rath - er
 Dav - y who's still in the Nav - y And prob - ab - ly will be for
 me they've been com - in' to see To for - get a - bout life for a

C F/C bass Cmaj7 G11 C

gin. He says, "Son, can you
 be. He says, "Bill, I be -
 life. And the wait - ress is
 while. And the pia - no

mf

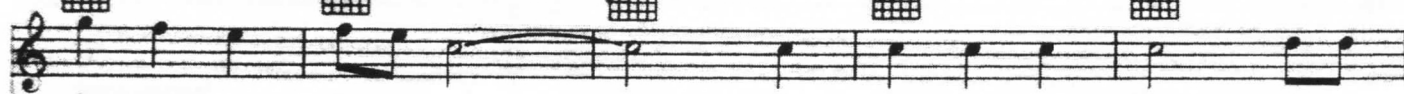
Em/B bass

Am

C/G bass

F

C/E bass



play me a mem - o - ry?
 lieve this is kill - ing me,"
 prac - tic - ing pol - i - tics,
 sounds like a car - ni - val

I'm not real - ly sure how it
 As a smile ran a - way from his
 As the bus - 'ness - men slow - ly get
 And the mic - ro - phone smells like a



D7

G

C

Em/B bass

Am



goes,
 face
 stoned
 beer

But it's sad and it's sweet and I knew it com -
 "Well, I'm sure that I could be a mov - ie
 Yes, they're shar - ing a drink they call lone - li -
 And they sit at the bar and put bread in my



C/G bass

F

G11

C



plete When I wore a young - er man's clothes."
 star If I could get out of this place."
 ness But it's bet - ter than drink - in' a lone.
 jar And say "Man, what are you do - in' here?"



Am Am/Gbass D7/F#bass F Am

Da da da de de da da da
 Da da da de de da da da
Instrumental
 Da da da de de da da da

Am/Gbass D7/F#bass D7 G G/Fbass

de de da da da
 de de da da da
 de de da da da

C/Ebass G7/Dbass C Em/Bbass Am

Sing us a song, you're the pia - no man

C/G bass

C/E bass

D7

Sing us a song to - night.

Well, we're all in the mood for a mel - o - dy.

And you've got us feel - in' al - right.

F/C bass

Cmaj7

1. 2. 3.
G114.
G11

D. C. al Fine

2. Now
3. Now
4. It's a