

Desafinado

(Bossa Nova)

Antonio-Carlos Jobim

A

4/4

1. $F_{\Delta 7} \mid \text{no symbol} \mid G_{7\flat 5} \mid \text{no symbol} \mid G_{m7} \mid C_7 \mid A_{\emptyset 7} \mid D_{7\flat 9} \mid$

2. $G_{m7} \mid A_{7\flat 9} \mid D_7 \mid D_{7\flat 9} \mid G_{7\flat 9} \mid \text{no symbol} \mid G_{\Delta 7}^{\flat} \mid C_{7\flat 9} \mid$

B

$G_{m7} \mid B_{m6}^{\flat} \mid F_{\Delta 7} \mid E_{7\sharp 9} \mid A_{\Delta 7} \mid B_{\emptyset 7}^{\flat} \mid B_{m7} \mid E_7 \parallel$

$A_{\Delta 7} \mid B_{\emptyset 7}^{\flat} \mid B_{m7} \mid E_7 \mid A_{\Delta 7} \mid F_{m7}^{\sharp} \mid B_{m7} \mid E_7 \mid$

$C_{\Delta 7} \mid C_{\emptyset 7}^{\sharp} \mid D_{m7} \mid G_7 \mid G_{m7} \mid D_{7\flat 9} \mid G_7 \mid C_{7\flat 9} \parallel$

C

$F_{\Delta 7} \mid \text{no symbol} \mid G_{7\flat 5} \mid \text{no symbol} \mid G_{m7} \mid C_7 \mid A_{\emptyset 7} \mid D_{7\flat 9} \mid$

$G_{m7} \mid B_{m6}^{\flat} \mid F_{\Delta 7} \mid D_{m7} \mid G_7 \mid \text{no symbol} \mid B_7^{\flat} \mid E_7^{\flat} \mid$

$G_7 \mid G_{m7} C_7 \mid F_6 \mid C_7 \parallel$

(MED. BOSSA)

DESAFINADO

-ANTONIO CARLOS JOBIM/
NEWTON MENDONÇA**A** Fmaj7

G7b5



G-7

C7

A-7b5

D7b9



1. G-7

A7b9

D7

D7b9



G7b9

Gbmaj7

(C7b9)



2. G-7

Bb-6

Fmaj7

B-7b5

E7#9



Amaj7

Bb07

B-7

E7

**B** Amaj7

Bb07

B-7

E7



A^{ma}7F[#]-7

B-7

E7

C^{ma}7C[#]o7

D-7

G7



G-7

D7b9

G7

C7b9

C^Fma7

G7b5

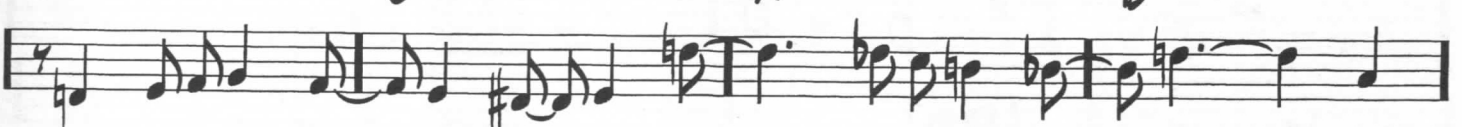


G-7

C7

A-7b5

D7



G-7

B^b-6F^{ma}7

D-7



G7

B^b-7E^b7

G7

G-7

C7

F⁶

(C7)

